

PCI Express

Compliance Baseboard Comparison from 1.0a to 1.1

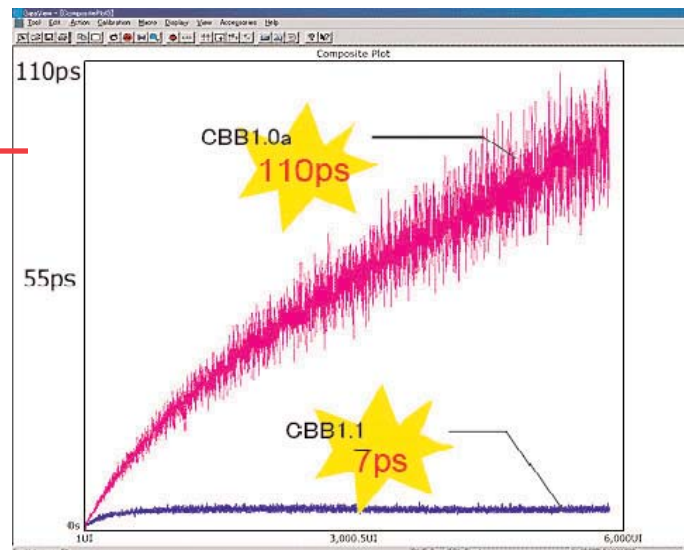
The following comparisons were determined using the nVIDIA PCI Express™ Graphics Card GeForce PCX6900 and PCI Express CBB specifications 1.0a and 1.1



Same graphics board gives very different results between specifications CBB 1.0a and CBB1.1. Because the PCI Express 1.1 Compliance Specification is defined at 10^{-12} a very clean reference clock is needed on the CBB board. This means TJ should be at $<108\text{ps}$ at BER 10^{-12} .

rms	pk-pk	TJ @ BER 10^{-12}
4.7 ps	41.9 ps	108 ps

PCI Express CEM Specification 1.1 - 4.6.3



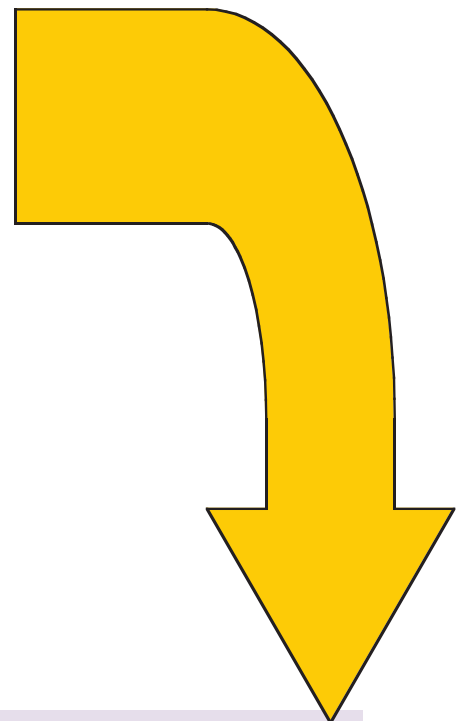
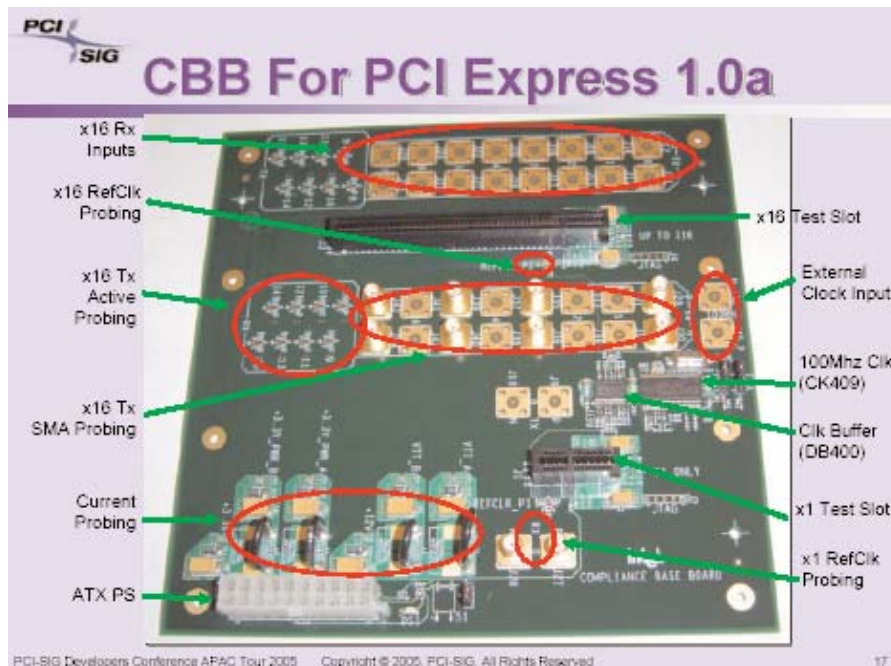
WAVECREST

7610 Executive Drive · Eden Prairie, MN 55344 · 952.831.0030 · Fax: 952.831.4474 · www.wavecrest.com

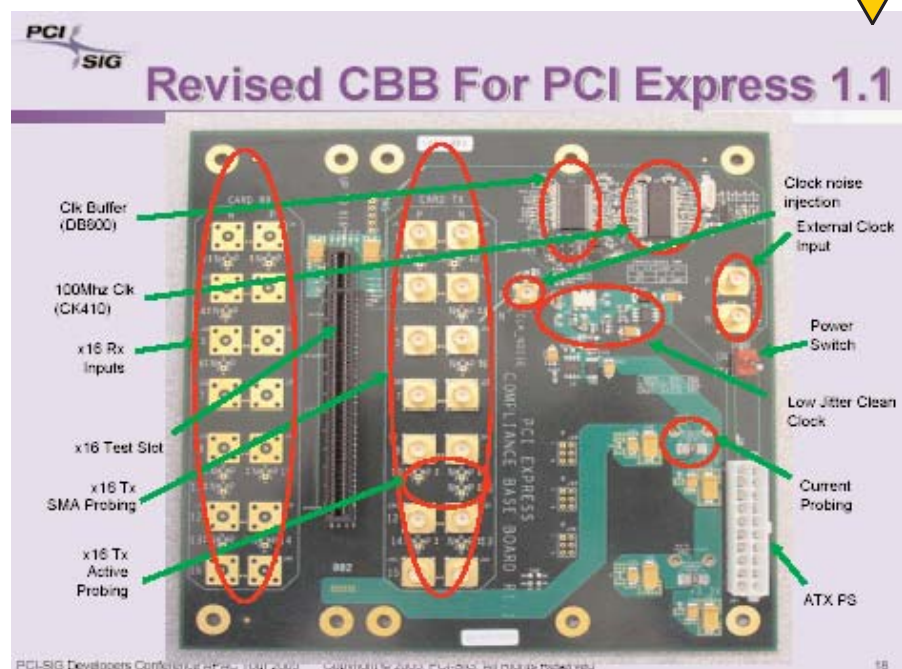
Wavecrest San Jose
408.436.9000

Wavecrest K.K.
81.3.5960.5770

PCI Express™ Baseboard Compliance



PCI Express Specification
rev 1.1 requires CBB 1.1



PCI-SIG Specs and Test Fixture can be found at www.pcisig.com/specifications/order_form

PCI Express is a trademark of the PCI-SIG



WAVECREST

7610 Executive Drive · Eden Prairie, MN 55344 · 952.831.0030 · Fax: 952.831.4474 · www.wavecrest.com

Wavecrest San Jose
408.436.9000

PCIe AN001_R1a

Wavecrest K.K.
81.3.5960.5770